



Gütermann
creativ



Sewing Thread



Gütermann creativ offers a wide range of sewing threads notable for highest quality.

Optimum stitching properties and an excellent colour selection enable professional results. Brilliant colours with silk-like gloss add a perfect look to all seams.

Gütermann creativ sewing threads provide numerous advantages:

- optimal sewability
- excellent and extensive colour selection
- high-quality raw material
- particularly soft and supple
- exceptional wear resistance
- elastic and extendible
- light-resistant and colour-fast

All sewing threads are offered on uniform reels with different lengths and an integrated thread tie-off device. Specially developed reel labels prevent peeling when inserting the reels onto the sewing machine spool holder.

The following pages provide an overview of the various sewing threads, with an informative guide to recommended applications and needle sizes.

Gütermann creativ wishes you fun with sewing and creative designing!

Sew-all Thread



Gütermann
creativ

The Gütermann creativ Sew-all Thread is the correct sewing thread for all materials and seams. It is exceptionally suitable for stitching with the sewing machine and by hand, regardless of the stitch type – the Sew-all Thread is designed to handle all demands.

This particularly high-quality and uniform sewing thread guarantees optimal sewing without fibre lint and seam crimping with the finest needles, from needle size NM 60. Strong and durable seams result from the high tear and abrasion resistance of the sewing thread. The brilliant colours with silk-like gloss lend the seam a high-quality and elegant appearance.

The Sew-all Thread impresses with its high quality and extensive colour selection in different lengths.

- made in Germany
- for all materials and seams
- no fibre lint with sewing
- tear-resistant with more than 50 % seam resistance reserve
- for sewing with the sewing machine and by hand
- no thick and thin locations, optimal stitch security
- for sewing with the finest needles, from needle size NM 60
- no twisting of the sewing thread

Sew-all Thread 100 m Art. 788988



- for lock and step seams
- for overlock and safety seams
- for buttonholes and for sewing on buttons
- for fine ornamental stitches and decorative seams
- recommended needle and needle size:
Universal Needle NM 70 – 90

- Thickness No. 100
 - 330 shades
 - 100 % Polyester
-



250 m Art. 717878

- Thickness No. 100
 - 186 shades
 - 100 % Polyester
-



500 m Art. 709239

- Thickness No. 100
 - 35 shades
 - 100 % Polyester
-



Sew-all Thread 1.000 m Art. 701939



- for lock and step seams
- for overlock and safety seams
- for buttonholes and for sewing on buttons
- for fine ornamental stitches and decorative seams
- recommended needle and needle size: Universal Needle NM 70 – 90

- Thickness No. 100
 - 10 shades
 - 100 % Polyester
-

Top Stitch 30 m Art. 744506



- for ornamental stitches and backstitch seams
- for decorative seams
- for manually stitched eye buttonholes
- silk-like gloss
- recommended needle and needle size: Universal Needle NM 100 – 120

- Thickness No. 30
 - 100 shades
 - 100 % Polyester
-

Extra Strong M 782 100 m Art. 724033



- for all heavily-stressed seams
- ideal for the sewing of jeans material (also in special jeans stitching colour No. 448)
- specially suitable for rugged repair work
- for heavy woven fabrics, leather and canvas covers
- stitchable with thin needle for material protection
- recommended needle and needle size: Universal Needle NM 70 – 100

- Thickness No. 40
 - 45 shades
 - 100 % Polyester
-





Natural Cotton 100 m Art. 744484



- for lock and step seams
- for overlock and safety seams
- for underwear buttonholes and for sewing on buttons
- for ornamental stitches and decorative seams
- recommended needle and needle size:
C Ne 50 Universal Needle NM 60 – 80

- Thickness C Ne 50
- 240 shades
- 100 % mercerized Cotton



250 m Art. 715271

- Thickness C Ne 50
- 70 shades
- 100 % mercerized Cotton



800 m Art. 743933

- Thickness C Ne 50
- 45 shades
- 100 % mercerized Cotton



Quilting 200 m Art. 719803



- special hand thread for quilting
- no curling while processing manually
- tear and abrasion resistant

- Thickness Ne 39/3
- 50 shades
- 100 % mercerized Cotton



Elastic Thread 10 m Art. 744557



- for gathering, crimping and smocking
- tracer yarn for knitting and crocheting work
- for sewing with the sewing machine as bobbin thread only

- Thickness No. 18
- 14 shades
- 64 % Polyester / 36 % Polyurethane



Silk S 303 100 m Art. 744590



- for fine closing seams with fine gloss
- for fine ornamental stitches and decorative seams
- for overlock and safety seams
- for buttonholes and for sewing on buttons
- recommended needle and needle size:
NM Universal Needle 80

- Thickness No. 100
- 80 shades
- 100 % Silk



Linen Thread 50 m Art. 744573



- strong and very tear-resistant natural thread for sewing by hand
- for sewing on buttons
- for stiff and heavy-duty materials and woven fabrics (e.g. rucksacks and bags)

- Thickness No. 30
- 8 shades
- 100 % Linen



Metallic Effect Thread W 331 50 m Art. 744603



- for ornamental stitches and decorative seams
- for creative crafting ideas
- results in sparkling and twinkling effects
- suitable as needle and reel thread
- recommended needle and needle size:
NM Universal Needle 100 – 110

- Thickness No. 90
- 12 shades
- 70% Polyamide / 30 % Polyester



Jeans Thread 100 m Art. 744476



- for darning jeans by hand or with the sewing machine
- for overlock and safety seams
- for fine ornamental stitches and decorative seams
- optimal colour adaptation to jeans material using bi-colour optics
- recommended needle and needle size:
NM Universal Needle 80 – 100

- Thickness No. 75
- 1 shade (blue-white)
- 70 % Polyester / 30 % Cotton



Basting Thread 200 m Art. 723550



- for tacking and penetration of materials

- Thickness Ne 42/2
- 3 shades
- 100 % Cotton



Hand measuring aid Art. 705560



- practical tailor aid for measuring
- with stitch counter
- for laying hems and folds
- made from flexible plastic, washable





Hemming web HT3



- for hemming textiles
- melts under the steam iron
- in different widths for optional application

3 cm x 10 m Art. 624853

- 100 % Polyamide



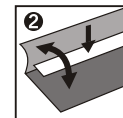
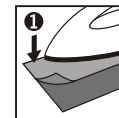
2 cm x 25 m Art. 616559

- 100 % Polyamide



10 cm x 10 m Art. 616567

- 100 % Polyamide



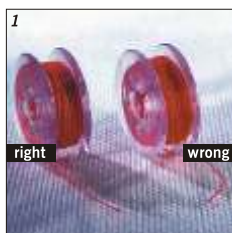
Application

1. Pre-iron the hem edge.
2. Place the hemming web between the material layers.
3. Press iron with steam (150° C / 2 points) onto cloth gradually for approx. 8 seconds. Allow hem to cool down.

Thread tension

The correct thread tension is essential to receive best sewing results with perfect looking seams. For setting the tension of the needle thread, please follow the instructions of your sewing machine manual.

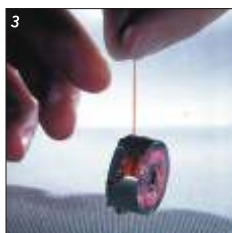
To generally adjust the under thread tension, see the guideline underneath:



1. ■ Wind the thread onto your lower thread bobbin evenly, if your sewing machine has two speed settings, choose the slower one.



2. ■ Place the full bobbin into the bobbin case. Make sure that the bobbin moves in a clockwise direction.



3. ■ Hold the thread end which sticks out of the bobbin case. Let the bobbin slide down, still holding the thread. The tension is right if the bobbin case moves downwards very slowly.



4. ■ If the bobbin case does not move or drops too quickly, the lower thread tension must be re-set. For a tighter tension, turn the tension screw in a clockwise direction.

5. ■ When setting the upper thread tension, please ensure that the stitch interlooping is in mid-fabric (sewing machine setting 2-3). The most attractive seam is produced with a very low thread tension.

Perivale-Gütermann Pty. Ltd.
Northshore Corporate Centre,
810 Pacific Highway
AU-Gordon, N.S.W. 2072
Tel +61 2 941606-05
www.guetermann.com

027480 3728.2210/2.