

I SEE THE LIGHT

Music by ALAN MENKEN
Lyrics by GLENN SLATER

Moderately



mf



Female: All those days, watch-ing from the win-dows.
Now I'm here, blink-ing in the star-light.



All those years, out-side, look-ing in. All that time,
Now I'm here; sud-den-ly I see.



nev-er e-ven know-ing just how blind I've been.

2.

F



Em



Am



D7



Stand - ing here, it's oh, so clear I'm where I'm meant to

G7sus



G



F(add2)



F



C/E



be. And at last I see the light, and it's

G7



Csus



C



F(add2)



F



like the fog has lift - ed. And at last I see the

C/E



E7sus



E7



Am7



light, and it's like the sky is new. And it's

F(add2)



F



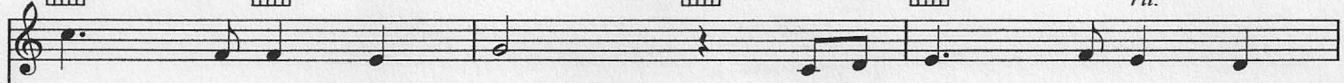
C



Em



rit.



warm and real and bright, and the world has some - how



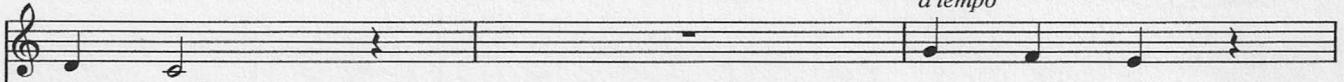
F(add2)



C



a tempo



shift - ed. All at once,



G7/C



C



F



G7



C



rit.

a tempo



ev - 'ry - thing looks dif - f' rent, now that I see you.



G7/C C

Musical notation for the first system, measures 1-3. The treble clef contains a melody of quarter notes. The bass clef contains a bass line with a 7/8 time signature. Above the staff are guitar chord diagrams for G7/C and C.

G7/C C F C/E F G

Musical notation for the second system, measures 4-6. The treble clef contains a melody. The bass clef contains a bass line. Above the staff are guitar chord diagrams for G7/C, C, F, C/E, F, and G.

C D7 G7sus G7 Bb7sus Bb7

gva-----

Musical notation for the third system, measures 7-9. The treble clef contains a melody. The bass clef contains a bass line. Above the staff are guitar chord diagrams for C, D7, G7sus, G7, Bb7sus, and Bb7. A dashed line with the marking *gva* spans across the end of the system.

Eb Bb7/Eb Eb

Male: All those days, chas-ing down a day-dream. All those years

(gva)-----

Musical notation for the fourth system, measures 10-12. The treble clef contains a vocal line with lyrics. The bass clef contains a piano accompaniment. Above the staff are guitar chord diagrams for Eb, Bb7/Eb, and Eb. A dashed line with the marking *(gva)* spans across the end of the system.

Bb7/Eb



Eb



Ab



Eb/G



Ab



Bb7



liv - ing in a blur. All that time, nev - er tru - ly see - ing

Eb



F7



Bb7sus



Bb7



Eb



things the way they were. Now she's here,

Bb7/Eb



Eb



Bb7/Eb



Eb



shin - ing in the star - light. Now she's here; sud - den - ly I know:

Ab



Gm7



Cm



F7



if she's here, it's — crys - tal clear I'm where I'm meant to

Bb7sus

Bb7

Ab7sus2

Ab

Eb(add2)



go.

Both: And at last I see the light,

Male: and it's

Bb7sus

Bb7

Ebsus

Eb

Ab(add2)

Ab



like

the fog has lift - ed.

Both: And at last I see the

Eb(add2)/G Eb/G

G7sus

G

G/B

Cm

Cm/Bb



light,

Female: and it's like the sky is new.

Both: And it's



warm

and real — and bright, —

and the world has some - how

Expressively

Bb/Ab



rit.

Ab(add2)



4 fr

Eb(add2)



6 fr

a tempo

shift - ed. *gva* All at once,

rit. *a tempo*

Bb7/Eb



6 fr

Eb



3 fr

Ab



4 fr

Bb7sus



Eb



3 fr

Ebsus



6 fr

Eb/D



ev - 'ry - thing is dif - f'rent, now that I see you.

Slowly, freely

Cm7



3 fr

F9



7 fr

Bb7sus



Bb7



Now that I see

rit.

Eb



3 fr

Eb(add2)



6 fr

Eb



3 fr

you.

rit.