

# PISGAH NATIONAL FOREST

## PISGAH RANGER DISTRICT

### NORTH CAROLINA

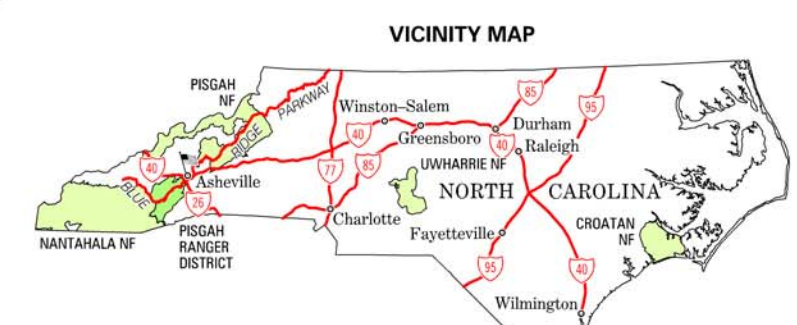
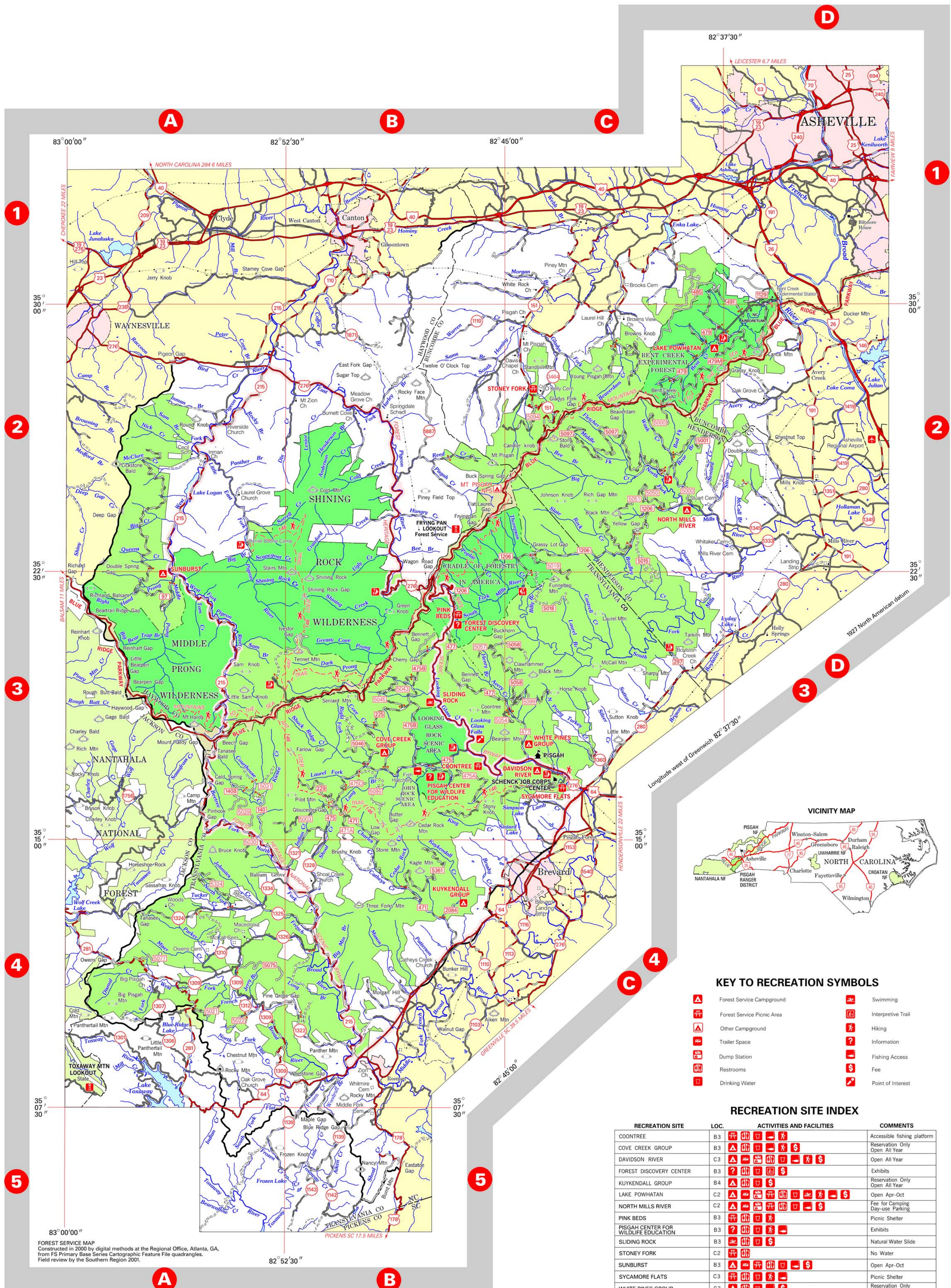
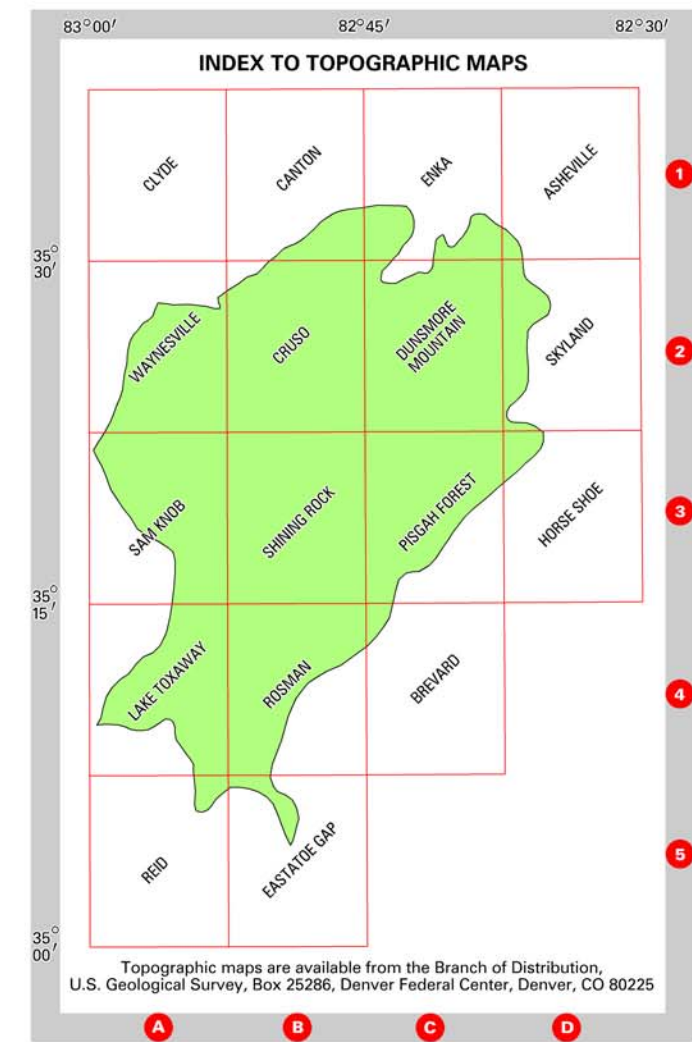
2001

Scale 1:126,720



#### LEGEND

- |  |                              |  |  |  |   |  |                                  |
|--|------------------------------|--|--|--|---|--|----------------------------------|
|  | National Forest Boundary     |  | Primary Highway  |  | Interstate  |  | Forest Headquarters              |
|  | County Boundary              |  | Secondary Highway  |  | U.S.  |  | Ranger District Office           |
|  | Special Area Boundary        |  | Scenic Byway   |  | State   |  | Other Forest Service Facility    |
|  | Pisgah National Forest       |  | Light Duty Road, Paved   |  | National Forest, Secondary, Suitable for Passenger Cars |  | School, Church, Cemetery         |
|  | National Forest Special Area |  | Light Duty Road, Gravel  |  | National Forest / State Trail Numbers                   |  | Forest Service, Other Campground |
|  | Adjacent National Forest     |  | Light Duty Road, Dirt  |  | Gate  |  | Picnic Area, National Forest     |
|  | Blue Ridge Parkway           |  | Unimproved Road, includes 4WD and suitable for High Clearance Vehicles |  | National Recreation Trail                               |  | Parking, Trailhead               |
|  | Power Transmission Line      |  | Trail  |  |   |  | Visitor and Information Center   |
|  | Railroad                     |  |  |  |   |  |                                  |



- #### KEY TO RECREATION SYMBOLS
- |  |                            |  |                    |
|--|----------------------------|--|--------------------|
|  | Forest Service Campground  |  | Swimming           |
|  | Forest Service Picnic Area |  | Interpretive Trail |
|  | Other Campground           |  | Hiking             |
|  | Trailer Space              |  | Information        |
|  | Dump Station               |  | Fishing Access     |
|  | Restrooms                  |  | Fee                |
|  | Drinking Water             |  | Point of Interest  |

#### RECREATION SITE INDEX

RECREATION SITE	LOC.	ACTIVITIES AND FACILITIES	COMMENTS
COONTREE	B3		Accessible fishing platform
COVE CREEK GROUP	B3		Reservation Only Open All Year
DAVIDSON RIVER	C3		Open All Year
FOREST DISCOVERY CENTER	B3		Exhibits
KUYKENDALL GROUP	B4		Reservation Only Open All Year
LAKE POWHATAN	C2		Open Apr-Oct
NORTH MILLS RIVER	C2		Fee for Camping Day-use Parking
PINK BEDS	B3		Picnic Shelter
PISGAH CENTER FOR WILDLIFE EDUCATION	B3		Exhibits
SLIDING ROCK	B3		Natural Water Slide
STONEY FORK	C2		No Water
SUNBURST	B3		Open Apr-Oct
SYCAMORE FLATS	C3		Picnic Shelter
WHITE PINES GROUP	C3		Reservation Only Open All Year

FOREST SERVICE MAP  
Constructed in 2000 by digital methods at the Regional Office, Atlanta, GA,  
from FS Primary Base Series Cartographic Feature File quadrangles.  
Field review by the Southern Region 2001.