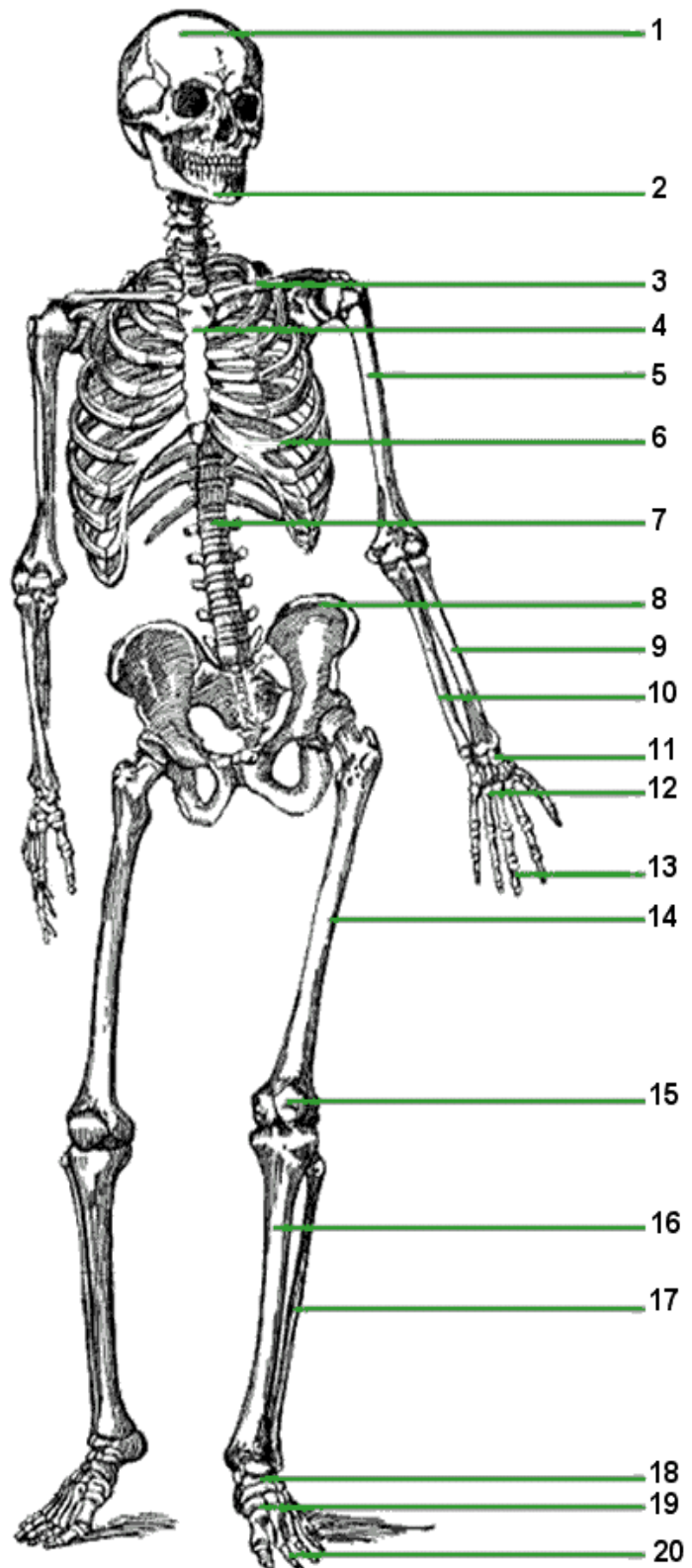


SKELETAL SYSTEM STUDY GUIDE

HUMAN SKELETAL SYSTEM Color the diagram below using the table as a key.

Number	Color	Name of Bone
1.		
2.		
3.		
4.		
5.		
6.		
7.		
8.		
9.		
10.		
11.		
12.		
13.		
14.		
15.		
16.		
17.		
18.		
19.		
20.		



CLASSIFICATION OF BONES

There are 206 named bones of the human body that are classified into axial and appendicular skeletons

THE AXIAL SKELETON

80 bones segregated into three major regions (the skull, vertebral column, and rib cage). These are the bones that are most involved in **protecting**, **supporting**, and carrying other body parts.

The Skull: Sometimes also referred to as the **cranium**, but actually the cranium is the portion of the skull that protects the brain. The skull includes 8 cranial bones and 14 facial bones.

Mandible – the lower jaw, largest and strongest facial bone

The Vertebral Column: consists of 26 irregular bones and extends from the skull to the pelvis where it transmits the weight of the body to the lower limbs. The bones of the vertebral column include 24 vertebrae, the sacrum, and the coccyx.

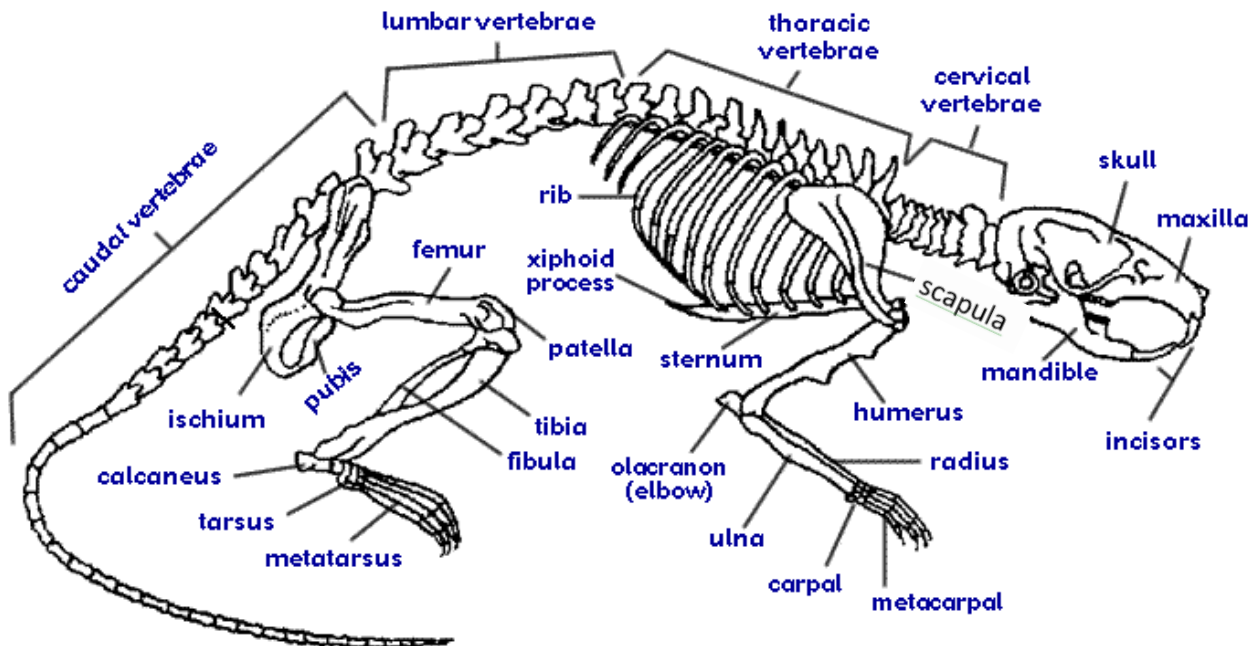
The Bony Thorax: composed of the 12 pairs of **Ribs** and the **Sternum**

The Appendicular Skeleton

126 bones of the upper and lower limbs and the shoulder and pelvic girdles. These bones assist in locomotion and help us manipulate the environment.

Bones of the appendicular skeleton include:

- | | |
|--|---|
| 1. Clavicle (collar bone: 2) | 9. Pelvic Bones (hip bones: 2) |
| 2. Scapula (shoulder blade: 2) | 10. Femur (upper leg bone: 2) |
| 3. Humerus (upper arm bone: 2) | 11. Patella (knee cap: 2) |
| 4. Radius (forearm, thumb side: 2) | 12. Fibula (lower leg bone: 2) |
| 5. Ulna (forearm, pinky side: 2) | 13. Tibia (shin bone: 2) |
| 6. Carpals (wrist bones: 16) | 14. Tarsals (ankle bones: 14) |
| 7. Metacarpals (hand bones: 10) | 15. Metatarsals (foot bones: 10) |
| 8. Phalanges of hands (fingers: 28) | 16. Phalanges of feet (toes: 28) |



List 5 functions of bones within the skeletal system!

1. _____
2. _____
3. _____
4. _____
5. _____

Describe compact bone!

1. _____

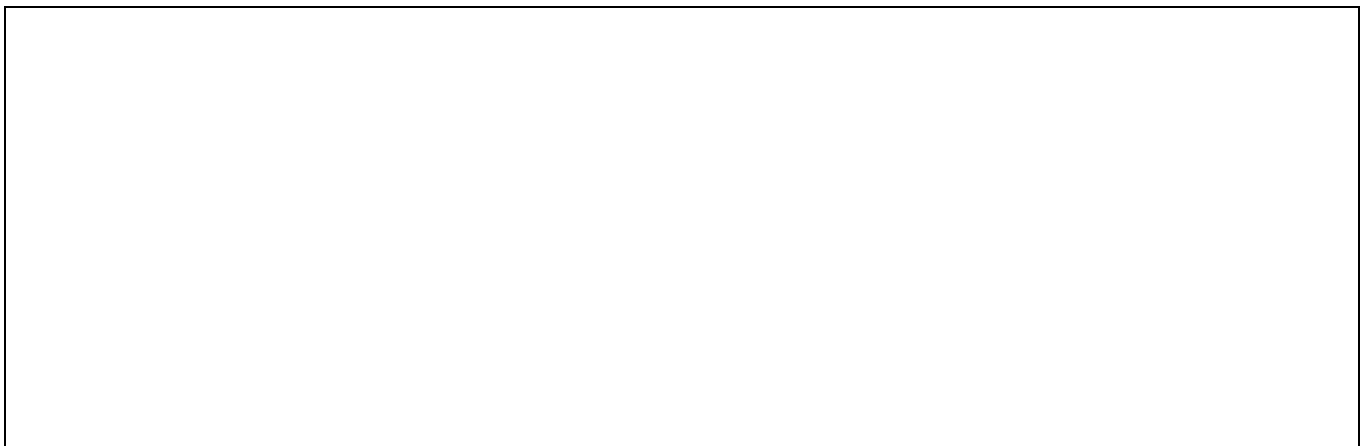
Describe spongy bone!

2. _____

There are two types of bone marrow:

- **Red**
 - Produces red blood cells, white blood cells and platelets
 - Gets its red color from the hemoglobin in the red blood cells
- **Yellow**
 - Produces fat, cartilage, and bone
 - Gets its yellow color from the carotenoids in the fat droplets in the fat cells

Draw a diagram illustrating where yellow and red bone marrows are found within a long bone!



Describe where you can find each of the following shapes of bones!

1. Flat: _____
2. Irregular: _____
3. Short: _____
4. Long: _____

